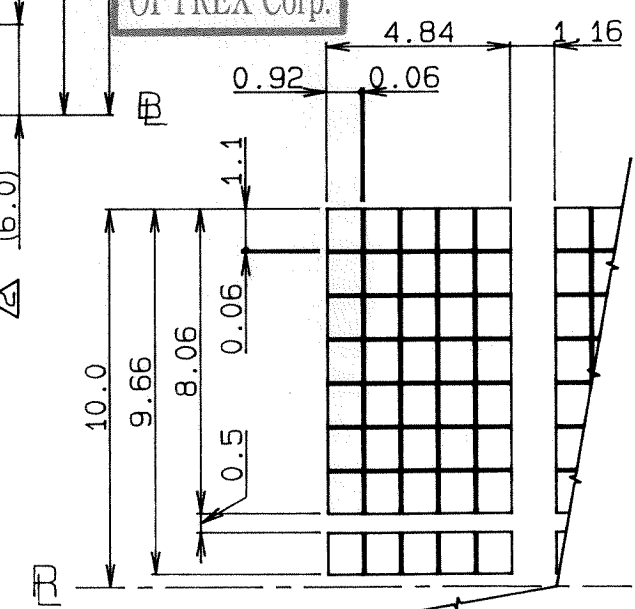


PIN ASSIGNMENT

PIN No.	SYMBOL
1	V _{SS}
2	V _{CC}
3	V _{EE}
4	RS
5	R/W
6	E
7	DB0
8	DB1
9	DB2
10	DB3
11	DB4
12	DB5
13	DB6
14	DB7
15	LED CATHODE
16	LED ANODE

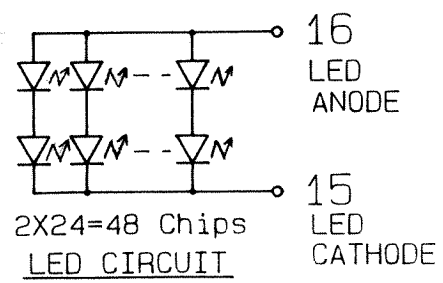
ISSUED
00.9.-4
OPTREX Corp.



DOT DETAIL (SCALE 5: 1)

TOLERANCE			
MEASURE	A	B	C
1≤16	±0.1	±0.3	±1
16<1≤63	±0.2	±0.5	±1.5
63<1≤250	±0.3	±0.8	±2
250<1≤500	±0.5	±1.2	±3
500<1≤1000	±0.8	±2	±4

ANGLE			
ANGLE	±30'	±1°	±2°
±30'	±1°	±2°	



REV	DATE	REVISIONS	NAME	MATERIAL	FINISH	Q'ty	NOTE
6							
5							
4				3rd ANGLE PROJECTION	TOLERANCE CLASS: A		SCALE: 2: 1 (5: 1)
3				APPROVED <i>DEC 09 92</i> <i>D. Kawabara</i>	MODEL		DMC16230 LED Series
2	Dec 8 '92	ADDITION AND CORRECTION OF DIMENSION (X13)	Y.Y	CHECKED <i>DEC 09 92</i> <i>Y. Yamaguchi</i>	TITLE		DIMENSIONAL OUTLINE
1	Sep 18 '90	CHANGE OF MODEL NAME (NY-LY1Series) (X1)	H.M	DRAWN <i>DEC 8 92</i> Y. YAMAGUCHI	CODE		
ISSUE	DATE	REVISIONS	NAME	DESIGNED <i>Dec 9 92</i> D. Nakamura	DRAWING No.		UE-31362B

OPTREX CORPORATION